



THE TROUTDALE CHAMPION

Published Six Times A Year
November / December 2018



Public Meeting to Discuss Rent Burdens

Hosted by the Citizens Advisory Committee
Wednesday, December 5 • 7 p.m.
Troutdale Police Community Center
Kellogg Room at 234 SW Kendall Court in Troutdale

Did you know that Troutdale has one of the highest rates of rent-burdened households in the state?

According to the Census Bureau, one in three households in the City is considered rent-burdened, in which a household spends 50 percent or more of their income on gross rent in the past 12 months.

Recently, the State of Oregon passed House Bill 4006, which requires certain cities (including Troutdale) with a high rent burdened population to perform several actions to address the issue. Among these actions are to host a public meeting to discuss the issue. The meeting on December 5th hopes to address the following topics:

- Causes and consequences of severe rent burdens within the city;
- Barriers to reducing rent burdens; and
- Possible solutions to reduce the number of rent-burdened households

All members of the public are welcome to attend; especially those who consider themselves to be rent-burdened. Housing and service providers are also strongly encouraged to attend.

If you can't make it, you can submit written comments to the City by emailing them to planning@troutdaleoregon.gov, or sending them to/dropping them off at City Hall (219 East Historic Columbia River Highway, Troutdale, OR 97060).

There's Still Time to Vote in the November 6th General Election

City Council Position 1
David Ripma

City Council Position 3
Jamie Kranz

City Council Position 5
Paul Wilcox
Nick Moon
Deb Reuter

The last day to safely mail in your ballot is Thursday, November 1st. If that date has come and gone and your ballot didn't make it, don't worry - you can still vote! You just need to deliver your ballot to either the Multnomah County Elections Office at 1040 SE Morrison Street, Portland, OR; or one of the County's official drop sites but you must do so **NO LATER THAN 8:00 p.m. on Election Day, Tuesday, November 6th**.

Troutdale has one official drop site which is inside the Troutdale Library, located at 2451 SW Cherry Park Road. You can drop your ballot off during their regular hours of operation (Monday – Tuesday from 12 p.m. to 8 p.m.; Wednesday – Saturday from 10 a.m to 6 p.m.; Sunday from 12 p.m. to 5 p.m.). For a listing of all ballot drop sites, please visit bit.ly/MultCoDropSites

Troutdale-specific items that will be on the ballot in this November's General Election are City Council Positions 1, 3 and 5 (at left). Refer to your Voter's Pamphlet for more information.



Troutdale Library ballot box

Time to Vote

Troutdale Holiday Tree Lighting

Friday, December 7th at 5:30-7 p.m. in Mayors Square

Don't miss a great holiday tradition ... Troutdale's Annual Tree Lighting! The festivities begin at 5:30 p.m. with choral performances by the Reynolds High School "Expressions" and The Fireside Carolers. The tree lighting is at 6 p.m., followed by the arrival of Santa and Mrs. Claus, escorted by Gresham Fire Department and Multnomah County Sheriff's Office. Toys will be distributed to children in Mayors Square.

Sip hot chocolate and coffee courtesy of Black Rock Coffee Bar, and pastries from The Chapel. Stroll the streets with carolers, take a picture with Santa, enjoy holiday shopping, and be sure to bring a donation for SnowCap Community Charities: canned or nonperishable food and blankets and/or clothing.

The Tree Lighting celebration is held in conjunction with the Troutdale First Friday Art Walk, featuring the work of local artists, musicians and craftspeople.

Questions? Email info@westcolumbiagorgechamber.com, or call 503-669-7473. Come for dinner, complete your shopping in Troutdale, and enjoy an old-fashioned holiday celebration!

Update on Big Developments Downtown

If you have been in downtown Troutdale lately you may have noticed two big things happening. The first is the new development at East Historic Columbia River Highway and SE Dora Avenue. Bremik Construction, who also built the new Troutdale Elementary School, is constructing a new two-story, 20,000 square foot building. While we don't know who the tenants will be, the first floor will likely be a retail/restaurant space, and

upstairs will be professional offices. As soon as that is finished and leased, they will likely build another two-story building of similar size at the other end of the block on East Historic Columbia River Highway and SE Harlow Avenue.

The second exciting activity downtown is behind the Columbia Gorge Outlets. After almost 20 years of looking at our old sewage treatment plant, and the old pullery building, the City is finally cleaning up the Urban Renewal site on the banks of the Sandy River. The clean-up should be done in January and we can then begin the process of looking for a great developer to partner with the City in developing the site.

(See 'Updates' on Page 3)

INSIDE THIS ISSUE

Chief's Corner, Page 2
Imagination Station Opens Nov. 17! Page 3
More Parking in the Downtown, Page 3
The Risks of Flooding, Pages 4,5
Free Electronics Recycling Event, Page 6
Disaster Preparedness Class, Page 7
What is First Friday Art Walk? Page 8
Event Calendar & City Meetings, Page 8

US POSTAGE PAID
STANDARD
PRESORT
TROUTDALE, OR

City of Troutdale
219 E. Historic Columbia
River Hwy.
Troutdale, OR 97060

POSTAL PATRON



Holiday Garbage Collection Schedule

For Christmas (December 25) and New Year's Day (January 1), Waste Management will delay collection by one day for the remainder of the week. **Inclement weather could change this schedule, so call Waste Management at 503-249-8078 if you have questions about rescheduled garbage pickups.**

WEEK OF CHRISTMAS

Residential Collection Day

Wednesday, December 26 (regular day)
Rescheduled to Thursday, December 27

Commercial Collection Day

Friday, December 28 (regular day)
Rescheduled to Saturday, December 29

WEEK OF NEW YEAR'S DAY

Residential Collection Day

Wednesday, January 2 (regular day)
Rescheduled to Thursday, January 3

Commercial Collection Day

Friday, January 4 (regular day)
Rescheduled to Saturday, January 5

free sandbags

The Public Works Shop, located at 342 SW 4th Street, has free sand and bags for filling. You'll need to fill, tie, load and transport the sandbags yourself in a manner that does not disrupt City operations. So bring your own shovel and go for it! For more information, call 503-674-3300.

Help reduce your risk of flooding by locating any storm sewer outlets near your home and keeping them free of debris and leaves, as well as trimming back any plant material that may restrict water from passing through.

secure your garbage

We're bracing for a cold, wet **and windy** winter! So be a good neighbor and remember to secure your trash and recycling receptacles. If the fasteners have snapped off or no longer work properly, call Waste Management at 503-249-8078 – they'll be happy to replace your defective containers.

emergency / contacts

Local Weather Conditions - Weather.gov

School Closures - FlashAlert.net

Emergency, service alerts - PublicAlerts.org

Power outages/downed lines

PortlandGeneral.com, or call 504-464-7777

Broken water pipes?

Call Public Works at 503-674-3300

After 5 p.m. or weekends? 503-251-4163



CHIEF'S CORNER

by Commander Monte Reiser
Chief of Police – City of Troutdale
Multnomah County Sheriff's Office



Winter weather in Troutdale....Brrrrreeeka! There is one well-known natural phenomena which we can all rely on this upcoming winter – Troutdale wind. When mixed with rain, sleet, snow – East Multnomah County can produce, as it has the past few years in particular, significant driving challenges. The weather can also bring about some other livability issues. So, in this article, I'd like to provide some tips and share information that may help you better prepare for the upcoming change in the weather.

Drive Carefully

Fall and winter weather = less Sunlight! Daylight savings time ends every first Sunday in November. Increased nighttime driving means drivers spend more time navigating in less ideal conditions. Vision, depth perception and adjusting to on-coming headlights can affect driving safety. Please ensure you are practicing safe nighttime driving habits to include dimming headlights when appropriate, keep your vehicle windshield clean, provide more stopping/reaction distance and routinely inspect your vehicle condition for ideal performance.

Vehicle Safety

This is a great time of year to have a professional mechanic assess your vehicle for optimum condition. Troutdale weather can become extreme and it's important to be ready! Prepare your vehicle by making sure your gas tank is at least half-full. If your vehicle becomes disabled, it's usually best to stay in your vehicle as walking during inclement weather can be very dangerous. Remember that dangerous driving conditions can also cause increased response time for emergency services.

At times, it's best to simply say "no" to driving until conditions caused by inclement weather improve. Making your own properly equipped winter travel "emergency car kit" is a good idea. At minimum, this kit can include the following:

- First aid kit
- Flash light
- Snow and ice scraper
- Water/snacks
- Blanket/sleeping bag
- Battery booster cables
- Tow chain/rope
- Emergency flares/reflectors
- Cell phone plug adaptor

In partnership with Troutdale Public Works and ODOT, the Multnomah County Sheriff's Office implements a traffic safety plan when I-84 (East of Troutdale) is closed due to inclement weather. This plan involves alternate route planning for the truck industry while ensuring Frontage Road/I-84 services are maintained.



Vulnerable Populations

Inclement weather can create challenges for our community's most vulnerable citizens. No matter the inclement weather event, there are citizens who may need your assistance. Please prepare a plan to check on those who may be in need. Prepare for potential power outages, extended periods of below-freezing temperatures and anticipate problems or needs that can arise. Conditions that prevent people from obtaining critical services or supplies can create life-threatening situations.

DUI Awareness

According to the National Highway Traffic Safety Administration, every day, 29 people in the United States die in alcohol-impaired vehicle crashes which is about one person every 50 minutes. Since 2015, deputies average about 55 DUI arrests in Troutdale each year. There is good reason why drinking and driving is illegal in all 50 states – because of the risk caused by alcohol's impact on the function of the brain, impairing thinking, reasoning and muscle coordination. Please, take a stand on drinking and driving this fall and winter season.

In Case of Snow or Ice Plowing the Streets

When the snow and ice comes, our City crews make clearing Troutdale streets their top priority. In the case of another snowmageddon, this winter, take a look at our street-clearing priority map at: <http://www.ci.troutdale.or.us/water-streets/documents/SnowandIcePriorityRoutes.pdf>

- **ARTERIAL STREETS** will be cleared first as those serve the greatest number of users and are the most critical to mobility. These include 257th Avenue, Troutdale/Buxton, Stark Street, Cherry Park Road, Halsey Street, and Columbia River Highway (City crews deploy to the County's arterial roads if the County's forces are occupied elsewhere).
- **EMERGENCY RESPONSE AND PUBLIC FACILITIES** are cleared next, such as the Police Station, Fire Station, City Hall, and schools.
- **COLLECTOR STREETS**, which provide connections to local streets come next. Among the collector streets are Beaver Creek Lane, Chapman Avenue, Corbeth Lane, Evans Avenue, Lewellyn Avenue, and Sweetbriar Lane.
- **LOCAL STREETS ARE NEAR THE BOTTOM OF THE PRIORITY LIST** and, in most cases, warming temperatures and/or rain will remove the snow or ice before snow removal crews can get there.

YOU CAN HELP by driving only if it's absolutely crucial immediately after a snow event. If driving is unavoidable, exercise caution and use traction devices whenever necessary. You can also help with the snow removal process by **parking off roadways** to allow room for plows to maneuver through narrow city streets. Residents as well as local businesses should keep **sidewalks** adjacent to the property **cleared of snow and ice**.

Have a terrific and safe holiday season! It's an honor to serve you. Monte

Commander Monte Reiser • Chief of Police, City of Troutdale • Multnomah County Sheriff's Office • Email: monte.reiser@mcso.us • Phone: 503-988-0352



It's a beauty! At left, just a portion of Imagination Station II. The rock-climbing wall at the far right features a mural of Multnomah Falls.



Above: The play area for children ages 2-5 includes a historic barn representing Troutdale Historical Society's local Barn Museum. In the foreground is the Space Net, a giant climbing cable net. Historic Fort Vancouver, at left, is adorned by the plaques of the volunteers who built the original Imagination Station.

Ready to play? Join us at Imagination Station Grand Opening & Ribbon Cutting Ceremony Saturday, November 17th at 2 p.m.

Go to our website at www.troutdaleoregon.gov, or Facebook page for periodic news and updates. Questions? Email Kimberly Carl at kimberly.carl@troutdaleoregon.gov or call 503-674-7256.

Oh, and tell the kids to wear their play clothes!

College Students Building New Picnic Shelter

Update on Downtown Developments

(Continued from Page 1)

It will also include a public park and trail along the waterfront from the I-84 Bridge, under the railroad tracks and into downtown Troutdale at Depot Park. The vision for this area, that has been on the shelf for decades, is about to become a reality! If you have any questions about these developments, contact Chris Damgen, your Community Development Director, at chris.damgen@troutdaleoregon.gov.

We think our grand new play structure deserves a brand new picnic shelter! And, thanks to a talented group of students at Portland's Northwest College of Construction (NWCC), Columbia Park will have a second shelter by the summer of 2019.

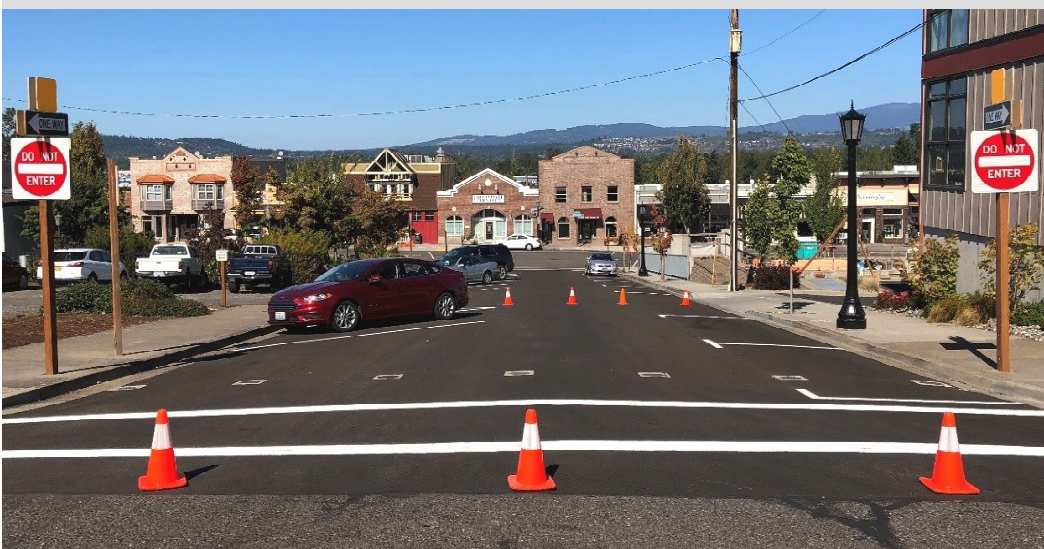
The picnic shelter had been on the Parks Department to-do list for some time, so it was a win-win situation when NWCC instructor Montie Boyer approached the City with the need for a new project for his students. The students are part of the apprenticeship program at NWCC and are working for on-the-job construction experience in a number of disciplines including carpentry, masonry, sheet metals, and concrete finishing.

A grill, power outlets and picnic tables will complete the shelter by the beginning of next summer. The tables were donated by Lowe's as part of their "Hero Project". We thank the students of NWCC and Lowe's "Hero Project" for their generous contributions. Stay tuned!



As part of the apprenticeship program at Northwest College of Construction, these students are building the new picnic structure at Columbia Park. From left to right: Jake Panasewich, Alberto Villazana, Oscar Villazana, Shane Waatti and Josh North.

New Traffic Pattern on Downtown Side Streets Creates More Parking Spaces



If you've been to downtown Troutdale in recent weeks, you've probably noticed the new traffic pattern that's been implemented on SE Dora and SE Harlow between East Historic Columbia River Highway (HCRH) and SE 2nd Street. These two parallel streets have been converted to a one-way "couplet" for the first block off of HCRH. This conversion has allowed the City to utilize space previously used for a travel lane on each street, enabling many of the previous parallel parking spaces to be converted to diagonal head-in parking. The result of this change is five additional parking stalls on Dora and four additional parking stalls on Harlow.

While mobility is the priority function of a roadway network, it's also essential to provide on-street parking in the central business district (CBD) in order to accommodate existing and developing land uses. In this case, this one-way couplet will not have a significant negative impact on vehicle circulation in the CBD while bringing the benefit of additional parking capacity that the downtown needs at very little cost. Please be mindful of these traffic pattern changes when visiting the downtown and take advantage of these additional parking spaces.



THE RISKS OF FLOODING...

WHAT TO KNOW

WHAT TO DO

Winter is fast approaching, bringing with it rainfall in the valleys and significant snow accumulation in the Cascades. As the snows on Mount Hood and the surrounding peaks melt in the

the spring, we can expect the possibility of flooding in Troutdale. Debris from a wet and windy winter can lead to ponding and localized flooding hazards,

particularly for properties along the Sandy River and Beaver Creek. One significant rain event can have a big impact on city infrastructure and our ability to properly handle flood waters.

Here are six tips to consider in order to be prepared for any potential flooding in Troutdale:

1. Know Your Risk

If you remember nothing else from this article, remember this: **everyone lives in a flood zone**. When we hear talk of flood zones, we often only think of low lying areas or properties along rivers and streams. The truth is that no property is totally immune to risks.



The Federal Emergency Management Agency (FEMA) produces and maintains Flood Insurance Rate Maps (FIRMs) which outline which areas of a jurisdiction have the greatest threats. These areas are often called flood zones, or the 100-year flood area, but are technically special flood hazard areas (SFHA), meaning that they are at a higher risk than others to experience flooding conditions.

Properties and infrastructure located in SFHA typically will have a one percent (1%) or greater chance to experience flooding in a given year. As a result, property owners are subject to additional development standards and are typically required to have proper flood insurance coverage.

In Troutdale, the SFHA cover about three percent (3%) of the City and are generally along riparian zones of the Sandy River and Beaver Creek, though there are additional low lying areas in the industrial areas north of Interstate 84 and some near the Edgefield properties west of downtown.

2. Insure your property for your flood hazard

Most home or renters insurance policies do not cover damage caused by flooding. When considering a flood insurance policy, be sure to look into a policy which covers both structural and content loss, as often those categories are separated. Ask your insurer if your property is qualified for a preferred risk policy. **Remember, you do not have to live in a SFHA to buy flood insurance!**

If you are a homeowner and your home is within a SFHA, you are typically required to carry a policy certified through the National Flood Insurance Program (NFIP), especially if you are carrying a mortgage.

If you are a renter in a unit that is within the SFHA, check with your landlord or management company about the insurance policy that is in place. You may wish to seek out a specific content-based coverage to protect your personal property.

Troutdale's participation in the Community Rating System program helps citizens save money on insurance. This means that insurance premiums are reduced up to fifteen percent (15%) for SFHA properties and five percent (5%) for all other properties in the City. Troutdale is proud to be one of only a few municipalities in Oregon and one of three in the Metro region that offer this discount to its citizens.



3. Protect people from the hazard

Most flooding deaths occur when people are driving or walking around, attempting to navigate a flooded area. While it doesn't sound like much, it takes only six inches of fast-moving water to knock over an adult, and only 12 inches of moving water to carry away a car. If you see standing water, do your best to avoid the situation. Turn around; don't drown!

4. Protect your property from the hazard

People can also be harmed in their homes and on their properties. Consider a few steps to protect your property:

- Maintain landscaping and clear passageways for floodwaters through clearing and pruning of overgrown trees, bushes, and brush.
- Protect your heating, cooling, and electrical systems by elevating fixtures or utilizing a conduit to protect wiring.
- Consider installing rain gardens or planting vegetation that can naturally absorb excess rainwater.

- Consider removing unused impervious surfaces, including concrete pads, patios, dilapidated sheds, or other features, and restore natural groundcover.

5. Build responsibly

The Troutdale Development Code has standards in place for development of property that attempts to reduce flood risk while recognizing the desire of its residents to improve their properties. Respecting code guidelines for building setbacks and elevating structures in special flood hazard areas allows for possible flooding to be properly mitigated while minimizing damage not only to your property, but for surrounding ones as well.

To ensure you are doing your part to improve your property in a responsible manner, please contact the City of Troutdale Floodplain Manager Ryan Krueger at 503-674-7261, or by email at ryan.krueger@troutdaleoregon.gov, to see if your improvement requires any permits, plan review, and/or inspections.

6. Protect natural floodplain functions

Responsible development allows for the environment to handle excess stormwater and minimizes the effects on our flora and fauna. One of the easiest steps to offer protection to our natural resources is to keep low-lying areas, ditches, or swales clear of any debris or garbage that may have accumulated over time. This eliminates blockades that prevent excess stormwater from flowing to proper discharge areas and ensures that pollutants don't enter the stream and affect habitation or their food supply.

Furthermore, the City of Troutdale prohibits by law anyone from dumping any rubbish, trash, garbage, debris or other refuse on public lands or waters other than in receptacles provided for such refuse. Such illegal actions can result in penalties and/or fines for engaging such behavior. If you have questions regarding what can be dumped into waterways or storm water channels, please contact the Troutdale Public Works Department at 503-674-3300.

In addition to the aforementioned floodplain considerations, the City of Troutdale continues to offer a Map Information Service that is able to locate a property based on a street address, and provide information via phone, email, or in-person meetings regarding potential local flood hazards for City-wide locations. In addition to the basic services discussed above, the City of Troutdale also offers the following services within its jurisdictional boundaries:

- Whether a property is located in a floodway;
- Whether the property is in a mapped repetitive loss area;
- Areas designated as natural floodplain functions under the Community Rating System program;
- Areas mapped in the National Wetlands Inventory; and,
- Areas mapped as critical habitat by the U.S. Fish and Wildlife Service.



This basic information is required for establishing a flood insurance policy, and interested parties can visit City of Troutdale Community Development Department, located at 2200 SW 18th Way, Troutdale, OR 97060, for more information about specific flood hazards within the City of Troutdale. Inquiries, including those individuals seeking advice on flood insurance, should be directed to City of Troutdale Floodplain Manager Ryan Krueger at 503-674-7261, or by email at ryan.krueger@troutdaleoregon.gov.

FLOODPLAIN PROPERTY PROTECTION ADVICE SERVICES FOR THE CITY OF TROUTDALE

The City of Troutdale has designated Senior Planner Ryan Krueger, CFM, as the coordinator for property protection advice (PPA) for the City of Troutdale. Ryan is available to provide in-person consultation and assistance for structural and non-structural flood protection and mitigation measures, including questions on flood insurance. The City is available to conduct site visits, when requested, and to discuss flooding, drainage problems, and retrofitting. The specific types of advice that may be provided under this program include:

- Methods for building demolition or relocation;
- Elevation requirements to raise the building above the flood level;
- Elevation requirements for damage-prone components, such as the furnace or air conditioning unit;
- Dry floodproofing standards to ensure the building is water-tight;
- Wet floodproofing portions of the building so water won't cause damage;
- Mechanisms for constructing a berm or to redirect drainage away from the building;
- Strategies for keeping nearby streams, ditches, and storm drains clear so debris does not obstruct them;
- Advice on sewer backup problems.

In order to ensure that all relevant flood-related issues can be addressed through this service, the City has further identified additional officials to compliment this service to ensure property protections from flood damage can be addressed. These officials, their qualifications, and their individual areas of expertise are as follows:

- **Ryan Krueger** – Senior Planner, City of Troutdale; Certified Floodplain Manager - Property Protection Advice Program Coordinator, and Elevation and Flood Insurance Advisor
- **Mark Krenz** – City of Troutdale Building Official – Flood Construction and Drainage Advisor
- **Bill Woods** – City of Troutdale A-Level Plumbing Inspector – Sewer Backflow Advisor and Drainage Advisor
- **Travis Hultin** – City of Troutdale Public Works Deputy Director – Stormwater, Drainage, and Sewer Backflow Advisor

If you would like to arrange for a site visit with any of these individuals to discuss the aforementioned services for your site, please reach out to City of Troutdale Floodplain Manager Ryan Krueger by email at ryan.krueger@troutdaleoregon.gov, or by phone at 503-674-7261. Ryan will coordinate with City officials and property owners wishing to learn more about what they can do to reduce their exposure to flood damage.



The December flood of 1964: Pictured are the cabins owned by Ruby and Elliot Staten, located under what is now the Glenn Otto Park parking lot. The property was acquired by the City in the late 1960s/early 1970s. Soon after that, the land was filled to be level with the highway. Photo courtesy of Troutdale Historical Society

TROUTDALE PARTNERS IN MULT. CO. NATURAL HAZARD MITIGATION PLAN

The City of Troutdale is a partner in the Multnomah County Multijurisdictional Natural Hazard Mitigation Plan (NHMP). A component of that plan includes a number of action items that are designed to assist Troutdale reaching its hazard mitigation risk reduction goals. These include actions focused on reducing risk to hazards such as earthquakes, floods, landslides, severe weather, volcanos, and wildfires.

Troutdale is on-track to complete all assigned actions by the plan update cycle in 2022. Of the eighteen (18) actions that apply to Troutdale, one has been completed, eleven are in progress, and six have not been started. The five highest prioritized actions, prioritized by self-identified scores in equity, benefit, cost, risk, and capacity, are all in progress (4 of 5) or complete (1 of 5). For more information on the scoring assigned to each action please refer to Chapter 4 of the NHMP, which can be found online by visiting <http://www.ci.troutdale.or.us/emergencypreparedness.html>.

A more in-depth progress report that includes recommendations on achieving Troutdale's identified hazard mitigation actions can be provided by Ryan Krueger, Senior Planner with the Community Development Department. If you would like a copy of the progress report, please contact Ryan Krueger at ryan.krueger@troutdaleoregon.gov or at 503-674-7261.

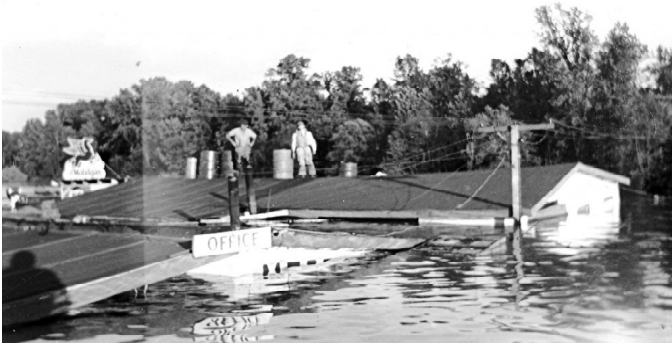
FINANCIAL ASSISTANCE FOR PROPERTY PROTECTION MEASURES

The City of Troutdale has designated Senior Planner Ryan Krueger, CFM, as the coordinator for financial assistance advice for properties within the City limits. Both pre-flood assistance and post-flood assistance may be available to provide added protection measures for your property. The types of assistance that may be available for your site include:

- **Pre-flood Assistance**
 - Projects fully or partially funded by a local agency. For example, some metropolitan sewer agencies fund part or all of a project to stop sewer backup and some communities have their own rebate, financial assistance, or construction programs;
 - FEMA mitigation grants;
 - State or local programs, such as grants, loans, and rebates;
 - Housing improvement assistance programs;
 - The U.S. Department of Agriculture's rural development grants and loans for mitigation;
 - The potential to reduce flood insurance premiums for certain mitigation projects (e.g., elevating the building above the base flood elevation); and,
 - Exempting the improvements from property tax increases.
- **Post-flood Assistance**
 - Flood insurance;
 - Flood insurance's Increased Cost of Compliance benefit for substantially damaged structures;
 - FEMA's Hazard Mitigation Grant Program; and,
 - The U.S. Small Business Administration's post-flood mitigation loans.

There may be additional measures available to you as a property owner. To learn more please contact City of Troutdale Floodplain Manager Ryan Krueger by email at ryan.krueger@troutdaleoregon.gov, or by phone at 503-674-7261.

1948 flood on NW Sundial Road. Photo courtesy of Troutdale Historical Society.



COMING SOON ...PUBLIC HEARINGS TO ADOPT NEW FLOODPLAIN MAPS

As you may be aware, the City of Troutdale has been working for the last several years with FEMA to develop new floodplain maps for the city. During this ongoing process many of you have likely attended meetings with FEMA to learn about what these changes will mean for you and your property. Troutdale is nearing the end of this multi-year process and will begin holding meetings and public hearing in the coming months to adopt these updated maps and new floodplain development codes for areas in the floodplain. Keep an eye out for more information on these upcoming Planning Commission and City Council meetings if you would like to attend. The first of these hearings will take place at the Planning Commission meeting on Wednesday, November 14. More information is posted on the City's website.

If you have questions or would like more information on these expected actions please contact Ryan Krueger CFM, Floodplain Manager with the City of Troutdale. He can be reached at ryan.krueger@troutdaleoregon.gov or at 503-674-7261.

HATS OFF, VOLUNTEERS!

We would like to recognize the City of Troutdale **Parks Advisory Committee** and **West Columbia Gorge Chamber of Commerce**, as well as the many groups and individuals who volunteer their time to the City of Troutdale:

In 2016, **Troutdale Kiwanis Club** adopted Sandee Palisades Park as part of the city's "Adopt-A-Park" project. The Club performs regular park maintenance and bark mulch installation;

FedEx adopted Columbia Park in 2017, implementing trail and tree maintenance, planting trees and doing general clean up;

Members of **The Sandy Chapter of the Northwest Steelheaders** have, for many years, been working on remodeling projects at the Sam Cox Building. They maintain trails at the Sandy River beach area, and also perform general park cleanup;

Lowe's, through their "**Hero Project**", donated eleven picnic tables, rebuilt and painted all the existing picnic tables at Columbia Park, installed trees, and applied bark mulch to the grounds;

Reynolds High School Sparrow Club recently installed wood chips on the Columbia Park forest trail and also performs general park cleanup;

Multnomah Youth Commission has done extensive trail work in parks throughout the City, and stormwater swale maintenance;

Troutdale resident **Tom Mitchell** repainted the historic wayside sign at Depot Park (next to the Caboose), repainted all railings at Mayors Square and rebuilt all of the wood trash receptacles in our City parks. Tom also picks up trash throughout the City.

From all the groups listed above to the many citizens who worked on the **Imagination Station Rebuild** project, we can't thank you enough! Your continued support in making our Parks the best they can be represents the very heart and soul of our great Troutdale community. And remember, rain or shine, to get out and enjoy your Parks - they make life better.

Your City Needs You Volunteer to be on a City Committee

The deadline has been extended to 5 p.m.
on Friday, November 23, 2018

If you are looking for a way to become more involved in your community, we just might have the perfect opportunity for you! We are currently accepting applications to serve on Troutdale's City Committees which include: Parks Advisory Committee, Citizens Advisory Committee, Planning Commission, Budget Committee and the Historic Landmarks Commission.

Committee application packets are available at City Hall – 219 East Historic Columbia River Highway, and on our web page at www.troutdaleoregon.gov. If you have questions please contact Kenda Schlaht, Deputy City Recorder, at 503-674-7237, or email kenda.schlaht@troutdaleoregon.gov.



Top photo: As part of their "Hero Project", Lowe's employees are rebuilding and donating new picnic tables at Columbia Park, including the ones for the new picnic shelter! Tom Mitchell, bottom photo, wears many hats as a volunteer. Here, he rebuilds the wooden trash receptacles.

Briefs

Thinking of starting your own business? Check out this new video series from Oregon's Secretary of State - go to <https://sos.oregon.gov/business>, and click on "Start a Business Video Series". You'll learn how to: choose your business name and legal structure, register your business name, get tax numbers, understand employer obligations, learn about insurance and bonding, and more. "When someone wants to start a business in Oregon, it's our job to clear the obstacles and show the way," says Ruth Miles, Small Business Advocate for the Secretary of State's Office. And don't forget, you'll need to apply for a Troutdale business license too! For information, call 503-665-5175, or visit www.troutdaleoregon.gov/executive/forms.html

UBER / LYFT Drivers may need a Troutdale business license
If you are an Uber/Lyft or other ride-share driver who lives in Troutdale, you are required to obtain a City of Troutdale business license, regardless of whether the clients you transport live outside the City limits or not. The City **does not** require a business license for a ride-share driver who lives outside the City limits, but picks up Troutdale residents. Please call 503-665-5175 for more information.

Free Electronics Recycling Drop-Off

Saturday, November 17
9 a.m. - Noon
Troutdale Public Works
342 SW 4th Street

Planning to score some Black Friday deals for new electronics but aren't sure what to do about your old electronics? Or maybe you have some old electronics collecting dust in your basement? Here's your opportunity to responsibly unload those old electronics and de-clutter your home at a special Oregon E-Cycles recycling event!

The following items will be accepted free of charge:

Computers, Televisions, Monitors, Printers, Computer peripherals, Networking devices, AV equipment, and most other small electronics.

Questions?

Contact Ali Briggs-Ungerer at ali@MRMrecycling.com

Responsible recycling provided by [Green Century Electronics Recycling](http://GreenCenturyElectronicsRecycling.com).

A Holiday Reminder to Recycle

The November/December Champion ushers in the holiday season with some useful information to help reduce an estimated 25 percent increase in trash generated between Thanksgiving and New Year's Day. That percentage amounts to approximately one million extra tons of trash per week. No need to be a Grinch, just remember a little reduce, reuse, and recycle can go a long way collectively.

Natural Christmas Tree Recycling

- Step 1 – Remove all tinsel, lights, ornaments, and any other decorations.
- Step 2 – Cut trees into sections no more than four (4) feet in length and four (4) inches in diameter to be placed in the yard debris cart with the lid closed. Trees set outside of the debris cart will incur extra charges depending on size. Please contact Waste Management customer service at 1-800-808-5901 if you have questions.
- Step 3 – Contact the property manager if you live in a multifamily unit to arrange tree collection services.

Reduce, Reuse, and Recycle Tips

- Make your own natural cleaning solution to save money and prevent potentially toxic ingredients from eventually reaching our waterways. Metro has recipes for a wide variety of uses such as countertops and appliances, floors, glass, and toilet bowls. Here's an easy all-purpose cleaner to get you started that can be scaled up:
 - ½ cup white distilled vinegar
 - 1 teaspoon liquid soap
 - 1 ½ cup warm water
 - Shake ingredients together in a recycled spray bottle to blend.



Visit <https://www.oregonmetro.gov/tools-living/healthy-home/green-cleaning> to learn more.

- Wrap gifts in reusable items readily on-hand such as scarves, dish towels, or linen. Add interest by tying on evergreen twigs, Oregon grape leaves, or pine cones. If you do use wrapping paper, please ensure it is free of metal or plastic so it can be recycled.
- Instead of purchasing extra toys that are not on your child's wish list, consider opening a savings account and put that money you'd spend on a toy towards the account. They'll thank you later in life!
- If mailing Christmas cards, repurpose old cards or purchase ones with high post-consumer waste content and printed with soy-based ink instead of laminated, foil-stamped or metallic inks. Also, make sure the address is correct to avoid a reported average of 20 percent incorrect mailing addresses that results in wasted time, money, and resources.
- Use reusable dishes, glassware, silverware, and napkins for big gatherings instead of disposables. If you don't have enough for the group size, purchase additional sets at an antique or second-hand store for a unique place setting. Or ask guests if they can bring their own.

Troutdale Recreation

Space Still Available for Free Disaster Preparedness Program

We Troutdalians live in, unarguably, one of the most beautiful regions of the country - an area of immense beauty and limitless opportunities for recreation and other forms of meaningful activity. Every time we hear of an emergency or natural disaster in another section of the country, we appreciate more and more this area which we call home.

We know an emergency or natural disaster could happen here. And we know the importance of being prepared - but many of us aren't. Two years ago, the City of Troutdale held an enormously popular Disaster Preparedness program featuring an official from Multnomah County's Office of Emergency Management, and our former City Manager Craig Ward.

By request, this **free** program is being offered again, for one



Disaster Preparedness
Monday, November 26th • 6-8:30 p.m.
Kellogg Community Room
Troutdale Police Community Center
234 SW Kendall Court

night only, on November 26th from 6-8:30 p.m. Presenters are Justin Ross from Multnomah County Office of Emergency Management, and Troutdale City Manager Ray Young. Attendance is limited to those 18 and older. **The program is filling up quickly, so act fast,** as online registration is required to save your spot. Don't delay. Register today.

Information and registration online: www.troutdaleoregon.gov.
You can also find us on www.facebook.com.
For questions, comments or assistance, contact Mollie King, Recreation Manager, 503-674-7206, or email mollie.king@troutdaleoregon.gov.

Troutdale Employee Kim Kesty Helps Bald Eagle Return Home

In mid-July, Troutdale employee Kim Kesty saw something you don't see every day – a 10-year old female bald eagle had taken a dive into the Troutdale Water Pollution Control Facility lagoon. This wasn't unheard of, as geese and ducks are often spotted around the area. Kesty, who was a distance from the lagoon and just leaving the plant to make a delivery, believed it to be a turkey vulture, also common in the area. When he returned, however, he took a closer look and saw it was a bald eagle, "covered and caked in biosolids" from the lagoon.



At the Sandy River in Troutdale, photo by Kiana Rose

Kesty immediately contacted the Audubon Society of Portland and a staffer came out to investigate. As bald eagles are a protected species the bird had a band on its leg, which indicated it was born in 2008 and had come from the area around Vancouver, British Columbia. Dried sewage from the lagoon had caused the bird's feathers to matt, leaving the eagle grounded. It was taken first to the Audubon Society, then to the Wildlife Center at the Oregon Zoo, where workers painstakingly used a toothbrush and wet cloths to remove the debris from

its body. A thorough check-up showed the eagle had no other injuries, and after ten days of care and nourishment, it was time to let it fly and hunt on its own again. The staff at the Wildlife Care Center, along with Kim Kesty, brought the eagle to the bank of the Sandy River and released her back into the wild. For Kim, this was a once-in-a-lifetime event. In a recent interview, he described the feeling of seeing the bald eagle again able to soar, and concluded simply, "It's not every day you get to help."

Kate Kaye, a Portland Audubon volunteer, wrote an article about the incident. You can find it here: <https://audubonportland.org/wcc/currentanimals/a-bald-eagle-far-from-her-canadian-home-lands-in-troutdale-sewage-lagoon>.

Reporting a 'Non-Emergency' Incident

We all know when to call 9-1-1, but what about reporting a "non-emergency" incident? Non-emergency incidents are police or fire situations that are **not** life-threatening, but require a response. These can include seeing a suspicious person roaming the neighborhood, discovering a homeless camp in a City park, reporting a burglary



that is no longer in progress, or finding the neighbor down the street burning his yard debris on a very windy day. Your non-emergency (and 9-1-1) calls are received and dispatched through the Bureau of Emergency Communications (BOEC) 9-1-1 call center in Portland. The call taker will dispatch the appropriate personnel based on the information they receive from you.

To report a non-emergency incident quickly and easily, do the following:

- Dial the non-emergency number, 503-823-3333 – you will hear two automated voice systems
- Press '4' immediately as soon as you hear the first male voice. This means you are reporting an incident occurring in Troutdale.
- Press '2' immediately when you hear the second male voice. This routes you to the dispatcher. You may have to wait a short time.
- Be specific when giving information to the dispatcher. If giving directions, be exact. Describe people by hair color, height, weight, clothing, physical and mental state, what direction they're walking or traveling, etc.

Remember, for any life-threatening emergency, always call 9-1-1 to save a life, report a fire, or stop a crime in progress.

Q & A with Troutdale Historical Society Treasurer Marilee Thompson

Marilee Thompson was recently interviewed by Troutdale Historical Society (THS) Vice President Erin Janssens to answer common questions about becoming a member of THS. Your membership enriches our ability to preserve and make available historic photos and artifacts, provide educational tours, and history programs. Three museums are available to the community through the efforts of members, volunteers, and donors.



The Barn Exhibit Hall and Troutdale Historical Society headquarters

Is the Board paid or do we have any paid employees?

People serving on the THS board and committees are all volunteers. Given we now have three museums and, really a world-class exhibit at the Barn Exhibit Hall, we currently have one paid employee.

How many members do we have?

Currently we have 348 members. At one time, THS had 500 members. We'd like to get back to that number not just to more solidly support all the upcoming needs THS has, but to spread the fun, proud (and sometimes colorful) history of Troutdale. Because in the long run, yes, we have buildings and things, but really, it's about people. The folks back then made history, and the people today who support history, someday will be a part of Troutdale history too.

What does membership cost and what does it fund?

An individual membership is just \$20. This gives you a quarterly newsletter, 10% off items in our gift store, invitations to THS co-sponsored free monthly History

Nights at Edgefield, our Summer Barnyard Concerts, our Annual meeting, and interesting lectures and tours throughout the year. Most importantly, your support helps to continue to preserve Troutdale's history, and keep our doors open by helping with all the expenses of maintaining three museums.

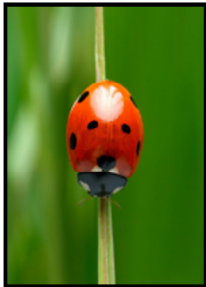
\$20 isn't much- how long have they been that low, and have you considered raising them?

A long time...I'm not sure, but we'd prefer not to raise dues for as long as possible, and instead increase membership.

Do members have to volunteer?

That seems to be the biggest myth we face. To be clear, NO! We don't bother you to join committees or require you to attend any meetings... we just invite you to join us for fun things.

Meet the Beetles!



Beneficial Insects, FREE Workshop
Saturday, December 1st • 9-11:30 a.m.
Multnomah County Sheriff's Office
Troutdale Police Community Center
234 SW Kendall Court in Troutdale
Pre-registration is required
at www.emswcd.org/workshops
Questions? Call 503-222-7645

Meet the beetles, bugs, flies, lacewings and other invertebrates that provide free pest control. You will discover ways to attract and sustain these friendly beneficial insects that help your garden thrive, and also learn about a few invasive insects to keep an eye out for.

If you missed the Landscaping with Edibles workshop on October 27th, you can catch it again here:

Landscaping with Edibles – FREE Workshop
Wednesday, November 14th • 6-8:30 p.m.
Mt. Hood Community College, Room GE201.
Pre-registration required:
www.emswcd.org/workshops
Questions? Call 503-222-7645

The Season to be Generous

We have a year-round food barrel in our lobby at City Hall, and Troutdale residents continue to respond generously and often! You can bring your non-perishable holiday food donation to City Hall between 8 a.m. and 5 p.m. Monday through Friday. Everything you give goes directly to SnowCap Community Charities and is distributed to needy families in our East County communities!



What can you bring?
Non-perishable food, including canned goods, dry pasta, rice, oats, canned tuna, soups, oils, peanut butter, bottled water, baby food, etc. “Low-Sodium” and “No Sugar Added” goods are always welcome, as is canned or dry pet food. Bring your donations to: Troutdale City Hall, 219 East Historic Columbia River Highway between the hours of 8 a.m. and 5

p.m. Monday through Friday. Thanks to all of you who have donated so generously over the years. Your charity is appreciated by the thousands of area residents who need temporary food assistance.

NOVEMBER

2
First Friday Art Walk, 5-9 p.m.
Downtown, Historic Columbia River Highway, 503-491-8407

12
Veterans Day (Observed), City Hall Offices Closed
Police/Fire emergency, call 9-1-1
Water/Sewer emergency call 503-251-4163

22, 23
Thanksgiving Holiday City Hall Offices Closed
Police/Fire emergency, call 9-1-1
Water/Sewer emergency call 503-251-4163

27
McMenamins Edgefield & Troutdale Historical Society History Night: The Ice Age Oregon Trail, presented by Rick Thompson, President of the Lower Columbia Chapter of the Ice Age Floods Institute, Blackberry Hall, Edgefield, 2126 SW Halsey, Doors open 5 p.m., Program at 6:30 p.m. – arrive early! FREE

DECEMBER

1
Christmas at the Harlow House
Saturday, December 1
Noon to 3 p.m.
726 East Historic Columbia River Highway in Troutdale. Bring your family to the Harlow House to visit with Mr. & Mrs. Santa Claus. Take a tour of the 1900 farmhouse and enjoy cookies and wassail. Hosted by the Troutdale Historical Society, 503-661-2164

1
Beneficial Insects, 9-11:30 a.m.
See article above

5
Public Meeting to Discuss Rent Burdens, 5-8 p.m.
See Page 1 for details

7
First Friday Art Walk, 5-9 p.m.
Downtown, Historic Columbia River Highway, 503-491-8407

7
Downtown Christmas Tree Lighting, 5:30-7 p.m.
See article, Page 1

Let’s Take an Art Walk

Join us December 7th for the next monthly art event

If you’ve never been to a Troutdale First Friday Art Walk, you’re missing something extraordinary. On the first Friday of every month (except January), from 5-9 p.m., the Historic Downtown businesses host dozens of local artists and craftspeople exhibiting their works of art. On any given First Friday, you might view the work of photographers, sculptors, mask makers, artisans, Tribal artists, jewelry makers, stained glass artists, watercolor, oil and acrylic painters, and more. Downtown businesses and restaurants offer a unique shopping and dining experience. And interesting workshops demonstrations, and local wine tastings round out this outstanding cultural event.

Alongside the art, you’ll find live music throughout the downtown, provided by local musicians playing folk, blues, jazz, romantic classical guitar, bluegrass, swing, Old Time American, and even Traditional Hawaiian Rock Classics. Bring your friends and family and stroll the Historic Columbia River Highway. Enjoy the Art, the Shops, the Music, and the People!

If you’re an artist or musician and would like to participate in First Friday, call Donna Erwin at 503-491-8407.



First Friday Art Walk • 5-9 p.m.
The first Friday of every month (excluding January)
Downtown, Historic Columbia River Highway

Helping Parents and Teens Communicate



Being a teenager or having a teenager can be tough. Parents and teens often butt heads over issues like curfews, grades, school attendance, house rules, electronics etc. Mediation can provide an opportunity for both parent and teen to talk about what’s important to them, and to help create practical agreements and new understandings to move forward.

Call East Metro Mediation at 503-618-3247, or visit www.greshamoregon.gov/mediation for more information about this free service.

City Meetings

City Council Regular Meetings
Police Facility Kellogg Room - 7 P.M.
November 13, November 27
December 11, December 25 (canceled)
View Council meetings live on Comcast Channel 30 or Frontier Channel 38 at 7 p.m.; rebroadcasts are Fridays at 4 p.m. and Sunday at 9 p.m.

Town Center Committee
Police Facility Kellogg Room
November 28 – Regular Meeting – 7 P.M.
December 26 - check website (below)

Planning Commission
Police Facility Kellogg Room - 7 P.M.
November 14, December 19

Parks Advisory Committee
Police Facility Kellogg Room - 7 P.M.
November 14, December 12 (canceled)

Citizens Advisory Committee
Police Facility Kellogg Room - 7 P.M.
November 7, December 5

Historic Landmarks Commission
Police Facility Kellogg Room - 7 P.M.
November 22 (canceled), December 27

Urban Renewal Agency
Police Facility Kellogg Room – 7 P.M.
November 20 (if needed)
December 18 (if needed)

Find meeting agendas, Council packets and audio/video of Council meetings at www.troutdaleoregon.gov

City Offices

City Hall Main Number	503-665-5175
Building Permits	503-674-7229
Building/Parks Rentals	503-674-7297
Business Licensing	503-665-5175
Code Enforcement	503-491-4009
Fire Department (Gresham)	503-618-2355
Mayor & Council	503-674-7258
Multnomah County Sheriff’s Office (MCSO)	
MCSO Business Office	503-988-7300
MCSO Records	503-988-7300
(press ‘0’ for Police Records)	
Municipal Court	503-665-5175
Police & Fire	
Non-Emergency Dispatch	503-823-3333
Parks Department	503-674-7271
Planning/Zoning	503-674-7229
Public Works (Wastewater)	503-666-8377
Public Works (Water & Streets)	503-674-3300
Recreation Program	503-674-7206
Water/Sewer - Billing Questions	503-674-7232
Water/Sewer - Open/Close Acct.	503-674-7225

CITY CALENDAR



25
Christmas Day, City Hall Offices Closed
Police/Fire emergency, call 9-1-1
Water/Sewer emergency, call 503-251-4163

25
No History Night in December –
Check back in January for another great program!

JANUARY, 2019

1
New Years’ Day, City Hall Offices Closed
Police/Fire emergency, call 9-1-1
Water/Sewer emergency, call 503-251-4163